



1.

Sally: What do you do after school Jack?
Jack: I play board games with my brother.

According to the dialogue, which of the following shows Jack's after-school activity?

A)



B)



C)



D)



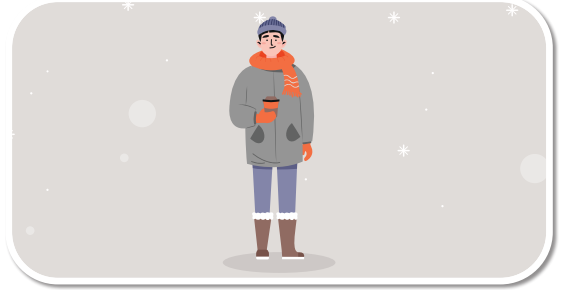
2.



Which of the following is NOT in the table above?

A) Summer B) Spring C) Autumn D) Winter

3.



According to the picture, what does Alex wear?

- A) He wears a shirt.
 B) He wears a skirt.
 C) He wears a coat.
 D) He wears sunglasses.

4.



Related to the pictures above, which of the following is NOT in the table?

A) a shirt B) trousers C) boots D) socks

5.



According to the picture, which one is correct?

- A) She has got an umbrella.
 B) She is slim.
 C) She is fat.
 D) She has got glasses.



TEST 1

THEME 3 - PERSONAL LIFE

6.

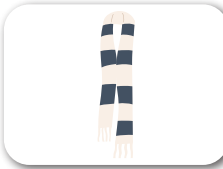


According to the visual above, which of the following pictures is NOT mentioned ?

A)



B)



C)



D)



7.

Cindy's daily activities are below.

Monday	Tuesday	Wednesday	Sunday
Shopping	Fishing	Listening to music	Playing basketball

Which one is CORRECT according to the table?

- A) She plays basketball at the weekend.
- B) She goes shopping on Tuesday.
- C) She goes fishing on Thursday.
- D) She listens to music at the weekend.

8.



Tom : What does she look like?

Luke : She is slim and she has got - - - eyes.

According to the picture and dialogue above, which of the following fills in the blank?

- A) hazel
- B) blue
- C) brown
- D) gray

The table below shows Simon's daily activities and their frequency. Answer questions 9-10 according to the table.

★★★★ always	★★★ usually	★★ often	★ sometimes
★★★★	★★	★	★★

9. How often does he read magazines?

- A) He often reads magazines.
- B) He always reads magazines.
- C) He usually reads magazines.
- D) He never reads magazines.

10. Which of the following is NOT correct?

- A) He always listens to music.
- B) He sometimes watches TV.
- C) He often rides a bike.
- D) He usually reads magazines.