



1. Answer the question according to the information below.

Last week, my science teacher Mrs. Anderson gave us homework about famous scientists. I prepare a questionnaire for my classmates and asked them who their favorite scientist in history is. There are forty students in my class. Twenty-two of them are boys and eighteen of them girls.

Here is the result;

- More than half of the boys chose Nikola Tesla as their favorite scientist.
- Most of the girls chose Marie Curie as their favorite scientist.
- Only few girls chose Albert Einstein.
- Less than four boys chose Stephen Hawking.

Which of the following graphics is TRUE according to the information above?



Nikola Tesla



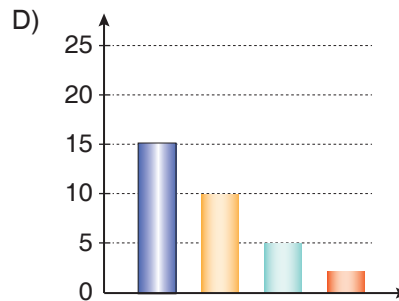
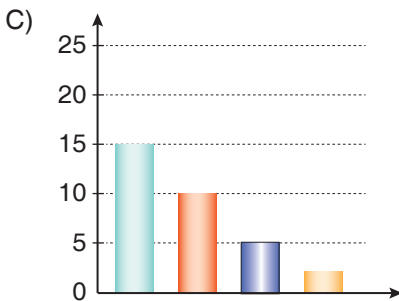
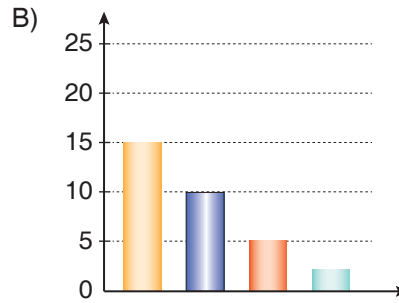
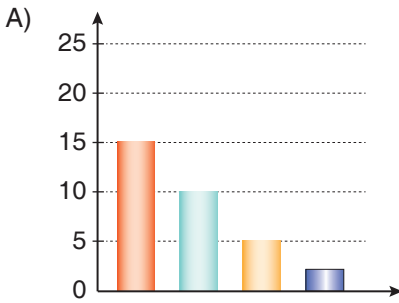
Marie Curie



Albert Einstein



Stephen Hawking



İşleyen Zeka Yayınları

2. **Merve** : Inventors are always trying to make people's lives easier. For example, one person invented the steam engine.

Suna : ---- ?

Merve : I am talking about new inventions.

Choose the best option to fill in the blank.

A) Why is it that



B) Do they need test tubes

C) Where are they making those experiments

D) What are you talking about

3.

Are you interested in science?
Would you like to see the wax sculptures
of significant inventors and discoverers?
If your answer is yes, this museum is just for you.
Don't miss this chance!

 Abdüsselam	 Albert Einstein	 A. Graham Bell	 Akşemsettin	 Alfred Nobel	 Ali Kuşçu	 Enrico Fermi	 Farabi	 Dr. Ferdinand
 Arşimet	 Amadeo	 Albert Abraham	 Batlamyus	 Battani	 Behram	 Harezmi	 Hendrik Lorentz	 Henkel
 Benjamin F.	 Bill Gates	 Biruni	 Cahit Arf	 Da Vinci	 Fahrenheit	 İbni Sina	 Maxwell	 James Watt

The museum is open every day (except Tuesday) from 9 a.m. to 6 p.m.

Contact us

Phone: 03211234567
 E-mail: sciencemuseum@jmail.com
 P.S: You have to buy your ticket only from our website
 (www.sciencemuseum.com) before visiting our museum.

According to the poster above, - - - .

- A) you can see the sculptures of inventions and discoveries in the museum
- B) visitors must buy the tickets only online if they want to see sculptures
- C) if you want to see the sculptures, you should visit there on Tuesdays
- D) people can visit the museum from 9 a.m. to 6 p.m. every day

İşleyen Zeka Yayınları

4.

There are so many things to say about Atatürk. He was not only a perfect soldier but also a great leader and a genius. He sent a lot of clever students to abroad to learn and follow the improvements on science and technology. After they returned their country, they helped the Republic of Turkey develop in every field of life. Also, he had many quotes on science. The best known is "Our true mentor in life is science." If we want to live in a better country, we must study and give importance to science and arts. Study for both yourself and your country.

Which of the following is the best title for the passage?

- A) Atatürk and Science
- B) Atatürk's Likes and Dislikes
- C) Atatürk and the History of Technology
- D) Science and Social Life



1. Answer the question according to the text below.

Alexander Fleming was born on August 6, 1881 in Scotland. He was a bacteriologist and best known for his discovery of penicillin. He was interested in biology and chemistry. He discovered penicillin in 1928 and started the antibiotic age. We have used it for treating or preventing infections caused by bacteria. Fleming became more famous in 1945 when he received the Nobel Prize for Physiology and Medicine.



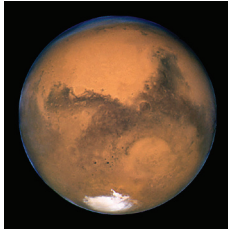
In this paragraph, there is NO information about his - - - -.

- A) achievements
B) family relationship
C) interests
D) discoveries

İşleyen Zeka Yayınları

Answer the questions (2-3) according to the pictures.

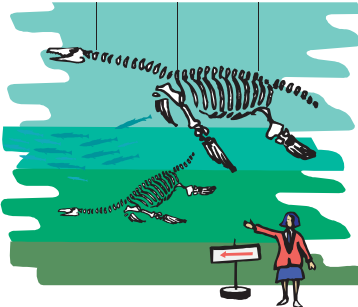
2.



A few scientist in Italy - - - - water under the surface of the - - - -

- A) studied / lab
B) cured / galaxy
C) found / planet
D) invented / chemistry

3.



The tour guide gave some information on - - - - .

- A) fossils
B) robots
C) gravity
D) microscope

4-5: For these questions, choose the best option to fill in the blanks.

4. Simon : - - - - ?

Trevor : He invented the first telephone.
Don't you know?

Choose the best option to fill in the blanks.

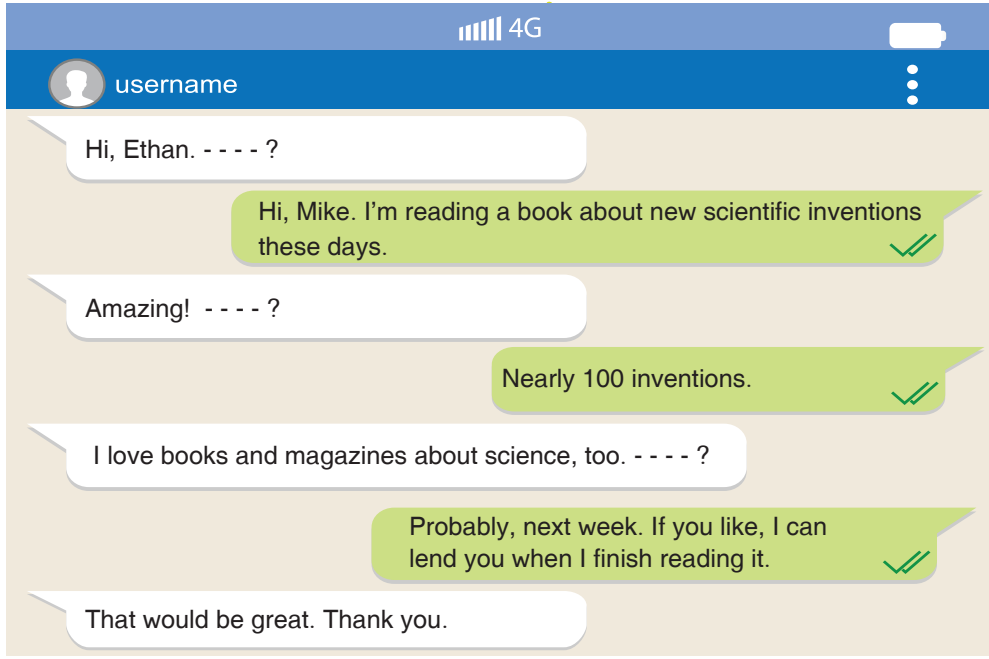
- A) Who discovered Neptune
B) What substance should I add into the test tube
C) What are they doing now
D) What did Alexander G. Bell invent

5. Gerard : - - - - ?

Mike : She spent most of her life collecting information about chimpanzees. Now, she is teaching at universities.

- A) What should I do to become a great scientist
B) What is this scientist famous for
C) Where did she do her studies
D) When did she begin to live with chimpanzees

6.



Which of the following questions does NOT Mike ask Ethan?

- A) What kind of books are you reading nowadays
- B) How many inventions are stated in the book
- C) Do you enjoy reading that kind of books
- D) When will you finish reading it

İşleyen Zeka Yayınları

7.

Answer the questions according to the passage below.

Lab Work

Science students spend many hours in science labs. They often do experiments in the lab to learn more about their study subject. For example, chemistry students carefully mix chemicals together and sometimes heat them. They observe how the chemicals change in color, density, and texture. Physics students do experiments. Biology students often use a microscope to see larger images of small living things. All students must obey the safety rules and use safety equipment because accidents can easily happen and people can get hurt.

What is the main idea of this paragraph?

- A) Lab work is an important part of learning about Science.
- B) Students mix chemicals in labs.
- C) Biology is the most important subject.
- D) Test tubes can easily break.

2. TEST	1. C	2. A	3. B	4. A	5. D	6. D
	7. B	8. D	9. B	10. D	11. C	
3. TEST	1. A	2. C	3. D	4. C	5. B	6. A
	7. D	8. B	9. C			
4. TEST	1. A	2. C	3. D	4. A	5. C	6. B
	7. B	8. A	9. C	10. D		

6. ÜNİTE DEĞERLENDİRME

1. A	2. A	3. B	4. D	5. B	6. A	7. C	8. A
9. D	10. C						

5. SARMAL DENEME

1. B	2. D	3. A	4. C	5. D	6. B	7. A	8. A
9. B	10. B						

7. ÜNİTE

TOURISM

1. TEST	1. B	2. B	3. D	4. C	5. A	6. B
	7. C					
2. TEST	1. D	2. B	3. A	4. A	5. B	6. A
	7. D	8. C	9. B	10. A		
3. TEST	1. C	2. B	3. D	4. B	5. A	6. C
	7. A	8. D	9. B			
4. TEST	1. C	2. A	3. B	4. A	5. D	6. C
	7. A					

7. ÜNİTE DEĞERLENDİRME

1. A	2. D	3. C	4. B	5. C	6. B	7. C	8. A
9. A							

6. SARMAL DENEME

1. B	2. C	3. D	4. C	5. D	6. B	7. B	8. A
9. A	10. C						

8. ÜNİTE

CHORES

1. TEST	1. D	2. B	3. C	4. A	5. C	6. B
2. TEST	1. D	2. D	3. B	4. A	5. D	6. C
	7. B					
3. TEST	1. D	2. C	3. D	4. B	5. D	6. B
	7. C	8. B	9. D			

8. ÜNİTE DEĞERLENDİRME

1. D	2. B	3. B	4. B	5. B	6. D	7. C	8. C
9. A							

7. SARMAL DENEME

1. A	2. A	3. C	4. D	5. D	6. B	7. B	8. B
9. A	10. D						

9. ÜNİTE

SCIENCE

1. TEST	1. C	2. A	3. B	4. A	5. A	6. D
	7. B					
2. TEST	1. D	2. D	3. B	4. A		

9. ÜNİTE DEĞERLENDİRME

1. B	2. C	3. A	4. D	5. B	6. C	7. A	
------	------	------	------	------	------	------	--

8. SARMAL DENEME

1. C	2. B	3. B	4. D	5. A	6. B	7. D	8. B
9. B	10. B						

10. ÜNİTE

NATURAL FORCES

1. TEST	1. A	2. B	3. D	4. A	5. B	
2. TEST	1. D	2. B	3. A	4. A	5. B	6. C
	7. C	8. A	9. B	10. A		
3. TEST	1. D	2. A	3. B	4. A	5. D	6. A
	7. C	8. D	9. C	10. B		

10. ÜNİTE DEĞERLENDİRME

1. C	2. C	3. B	4. A	5. C	6. D	7. B	
------	------	------	------	------	------	------	--

GENEL DENEME

1. D	2. C	3. B	4. B	5. A	6. C	7. D	8. D
9. B	10. B						