

Adı:

Soyadı:

Sınıfı:

1. Soru
(..... Puan)2. Soru
(..... Puan)3. Soru
(..... Puan)4. Soru
(..... Puan)5. Soru
(..... Puan)6. Soru
(..... Puan)7. Soru
(..... Puan)

Öğrenme Çıktısı: E5.5.R1. Students will be able to understand short and simple texts about illnesses, needs and feelings.

1. Answer the questions according to the text below.

Elif has a high fever and feels very tired. She drinks herbal tea and rests at home. Her mother says she shouldn't go outside in cold weather.

What's wrong with Elif?

She has a high fever.

What does she drink?

She drinks herbal tea.

What shouldn't she do?

She shouldn't go outside in cold weather.

Öğrenme Çıktısı: E5.5.R1. Students will be able to understand short and simple texts about illnesses, needs and feelings.

2. Match the pictures with the illnesses.

headache - runny nose - fever - broken arm



fever



runny nose



broken arm



headache





Öğrenme Çıktısı: E5.5.R1. Students will be able to understand short and simple texts about illnesses, needs and feelings.

3. Answer the questions according to the poster.

What should you eat?

I should eat healthy food.

What should you drink?

I should drink water.

What should you do at night?

I should sleep early.



Öğrenme Çıktısı: E5.5.R1. Students will be able to understand short and simple texts about illnesses, needs and feelings.

4. Fill in the blanks with the correct illness.

flu - toothache - fever - sore throat - backache

- I havethe.flu..., so I feel very tired and have a runny nose.
- I have a ..toothache, so I need to see a dentist.
- I have a ..sore throat, so it hurts when I talk.
- I have afever, so my body feels very hot.
- I have abackache, so I can't carry my school bag..

Öğrenme Çıktısı: E5.6.R1. Students will be able to understand phrases and simple sentences on posters and advertisements about movies and movie characters.

5. Answer the questions according to the poster.

What is the name of the movie?

The name of the movie is Space Battle.

What type of movie is it?

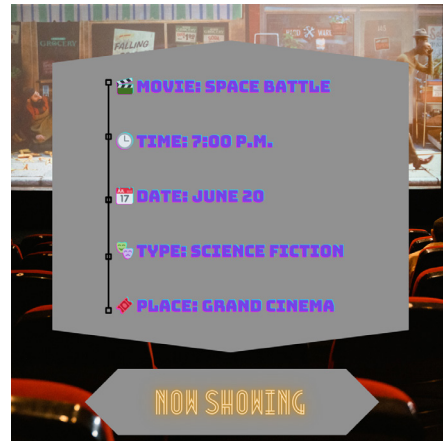
It is a science fiction movie.

What time is the movie?

The movie is at 7:00 p.m.

Where can you watch the movie?

You can watch it at Grand Cinema.





Öğrenme Çıktısı: E5.6.R1. Students will be able to understand phrases and simple sentences on posters and advertisements about movies and movie characters.

6. Fill in the blanks with the correct word.

action - horror - comedy - animation - science fiction

- A **science fiction** movie is about space and the future.
- A **comedy** movie is funny and makes people laugh.
- A **horror** movie is scary.
- An **action** movie has a lot of fighting and fast scenes.
- An **animation** movie has cartoon characters.

Öğrenme Çıktısı: E5.6.R1. Students will be able to understand phrases and simple sentences on posters and advertisements about movies and movie characters.

7. Complete the sentences using the correct movie names from the table.

dream star cinema weekly movie schedule>			
Movie	Type	Time	Day
Magic World	Fantasy	16:00	Monday
Haunted House	Horror	20:30	Thursday
The Treasure	Adventure	18:45	Saturday
Funny Friends	Comedy	11:15	Sunday

- There are **four** different types of movies in the cinema schedule.
- **Magic World** is a fantasy movie.
- You can watch **Funny Friends** on the weekend if you like comedy.
- **Haunted House** and **The Treasure** are playing in the evening.
- **Haunted House** is scary and exciting.

