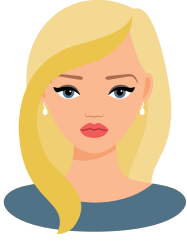




Answer the question according to the pictures.

1.



Jessica



Emily



Rose



Sue

Which of the following is **CORRECT** according to the pictures?

- A) Emily has curly red hair and Sue has long black hair.  
B) Emily has short black hair and Jessica has long blonde hair.  
C) Jessica has long blonde hair and Rose has short black hair.  
D) Sue has long blonde hair and Jessica has long black hair.

İşleyen Zeka Yayınları

2.

I. He is tall and medium weight.

II. She has long blonde hair.

III. He is short and overweight.

IV. She is slim and she has short hair.

a.



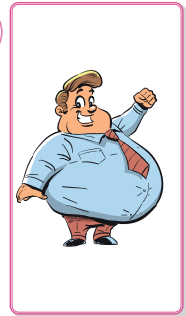
b.



c.



d.



Which of the matching is **CORRECT**?

- A) I → c  
II → d  
III → a  
IV → b

- B) I → c  
II → a  
III → d  
IV → b

- C) I → b  
II → c  
III → d  
IV → a

- D) I → d  
II → a  
III → c  
IV → b

