

# UNIT 1 MY DAILY ROUTINE Worksheet 1

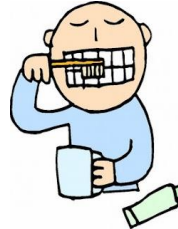
1. Match the words with the pictures.

Get ready for school – Have a snack – Read a book – Get back home – Brush teeth












2. Fill in the blanks with “ in / on / at

1. \_\_\_\_ half past four

6. \_\_\_\_ Thursday

2. \_\_\_\_ Friday

7. \_\_\_\_ the evening

3. \_\_\_\_ weekends

8. \_\_\_\_ 2015

4. \_\_\_\_ the afternoon

9. \_\_\_\_ quarter past seven

5. \_\_\_\_ 15.30

10. \_\_\_\_ the evening

3. Write the correct verb.

HAVE

breakfast

lunch

dinner

up

dressed

back home

newspaper

a book

magazines

hands

your face

the dishes

a shower

a snack

a rest

to school

to sports club

to bed

# UNIT 1 MY DAILY ROUTINE Worksheet 1

## 4. Match the questions with their answers.

- |   |                      |                                   |
|---|----------------------|-----------------------------------|
| a) What time do you get up ?            | <input type="text"/> | We have cheese, olives and jam.   |
| b) What do you have for breakfast ?     | <input type="text"/> | I do my homework and watch TV.    |
| c) Do you brush your teeth ?            | <input type="text"/> | We have seven classes every day.  |
| d) How do you go to school ?            | <input type="text"/> | At quarter past seven             |
| e) How many classes do you have daily ? | <input type="text"/> | On Friday.                        |
| f) What do you do after dinner ?        | <input type="text"/> | Yes, of course.                   |
| g) When do you go to sports club ?      | <input type="text"/> | By bus. I catch the bus at eight. |

## 5. Choose the correct one.

- a) Every **morning / evening** , I get up at seven o'clock.
- b) **Do / Does** your mother have breakfast at home ?
- c) We go to school on **Fridays / Sundays** .
- d) I get back home at four o'clock **in / on** the afternoon.
- e) My brother washes his **snack / hands** after dinner.

## 6. Fill in the blanks with WH- Questions

WHEN

On Monday  
At weekend  
In 2008

In Edirne  
At school  
In the garden

By school bus  
On foot  
By our car

At six o'clock  
At half past four  
At eleven p.m.

# UNIT 1 MY DAILY ROUTINE Worksheet 2

## 1. Match the words with the pictures.

Go to bed – Draw pictures – Read newspaper – Use a computer – Have breakfast



## 2. Match the times.

a. 09.00

It is nine o'clock

b. 08.50

It is twenty past nine

c. 08.45

It is quarter past nine

d. 09.30

It is quarter to nine

e. 09.15

It is ten to nine

f. 09.20

It is half past nine

## 3. Odd one out.

a) Monday / Friday / Weekday / Tuesday

b) have a shower / have dinner / have breakfast / have lunch

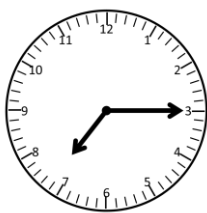
c) when / where / wash / who

d) get back home / arrive home / leave home / come home

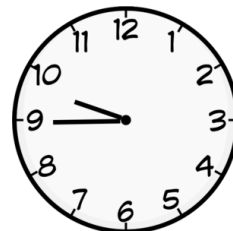
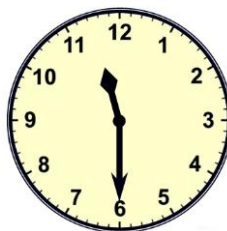
e) morning / homework / evening / afternoon

# UNIT 1 AFTER SCHOOL Worksheet 2

## 4. What time is it ?



It is quarter  
past seven



## 5. Correct the mistakes.

- a) We have a big **lunch** in the morning.
- b) My brother doesn't go to school on Saturdays and **Mondays** .
- c) I **brush** my face before breakfast.
- d) My classes finish **on** half past four.
- e) My grandfather likes **listening** newspaper.

## 6. Match the questions with their answers.

a) Who gets up last in your family ?

At the school canteen

b) What time do you have breakfast ?

He usually watches TV

c) What does your dad do in the evening ?

At quarter past eight

d) Where do you have your lunch ?

Two. My sister and me.

e) How many people go to school in your family?

My brother. His classes start at half past one in the afternoon.