

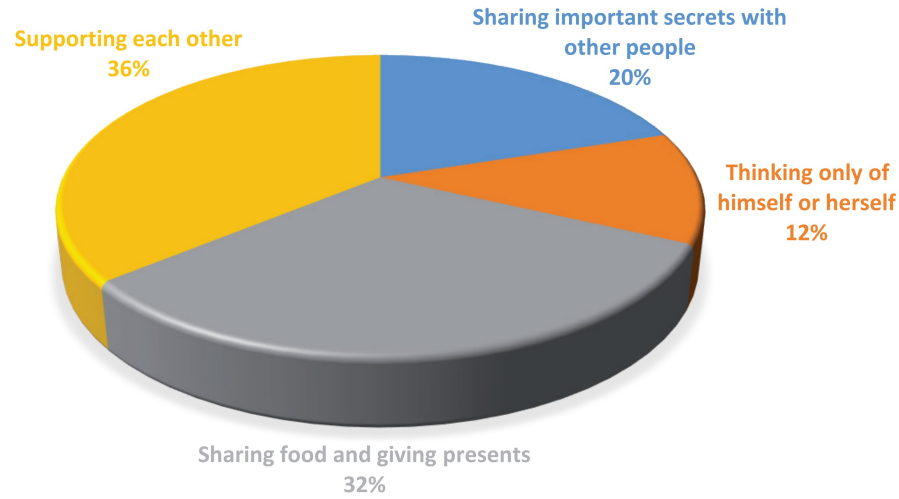
# 8

# Support Try yourself

Haktan Bağış KIRKKESELİ

LGS ALTIN ORAN

1. The school counselling service has conducted a survey in each class. Here are the results from one of the 8<sup>th</sup> grade classes.



Which of the following is **CORRECT** according to the survey result?

- A) Everyone in the class is unreliable and selfish.
- B) The number of students with good personality traits is higher than the students with bad ones.
- C) Generous and supportive people are a minority in the class.
- D) Most of the students in the class cannot be an ideal friend.

## Support

2. Stephanie is crazy about cooking. She loves trying new recipes. She even has a channel on YouTube and has many subscribers. She uploads videos nearly every day. We can see one of her video's steps here.



I



II



III



IV

Which of the following is **NOT** true according to the video?

- A) She mixes sugar, butter and eggs first.
- B) She places the cookies on the tray before kneading the dough.
- C) She bakes the cookies at 180 °C in the preheated oven.
- D) She kneads the dough after mixing the ingredients.

# 8 Try yourself

Support

Haktan Bağış KIRKKESELİ

LGS ALTIN ORAN

3.



This website sells everything you may need. Teenagers are especially keen on shopping online on this website.

Which is true for teenagers?

- A) Teenagers order a lot of music CDs.
- B) Books aren't popular so teenagers never spend money on books.
- C) Books are more popular among teenagers than clothes.
- D) Technology products are at the top of teenagers' shopping lists.

Support



4. Which question DOES NOT have an answer on the website?

- A) When is the best time to visit Paris?
- B) What is the most popular meal in France?
- C) What can you do in Paris?
- D) Which type of hotels can you stay in?

# 8

## Support Try yourself

Haktan Bağış KIRKKESELİ

LGS ALTIN ORAN

5. **Johnson** : Hey! Friday is my day off. Are you doing anything?

**Dorothy** : Why are you asking?

**Johnson** : I want to see a movie. It is quite funny. Do you want to go with me?

**Dorothy** : ---

**Dorothy's plan;**

Monday	Tuesday	Wednesday	Thursday	Friday	Saturday	Sunday
Going to the book fair	Taking my dog to the vet	Going to archery training	Meeting Lydia to do karaoke	Seeing the doctor	Shopping for the costume party	Going to Gloria's party

Which of the following completes the dialogue?

A) I am sorry, but I have an appointment at the hospital.

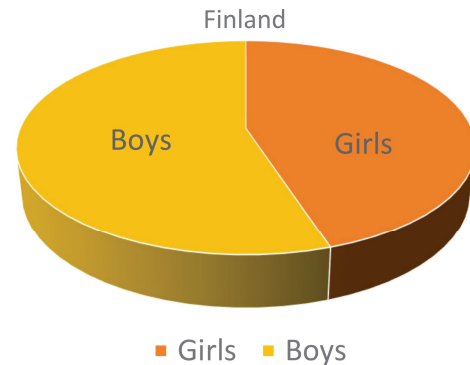
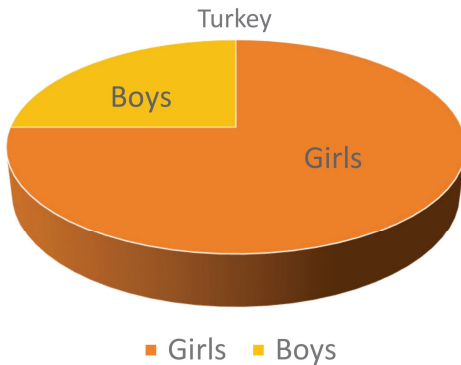
C) My dog is sick. I need to take him to the clinic.

B) I will do Karaoke with Lydia.

D) I promised to go to Gloria's party.

## Support

6. Here are the results of a survey about the school rules in two different countries. It tries to find out who obey the rules boys or girls?



According to the results, which of the following is CORRECT?

A) In Finland, girls and boys obey the rules equally.

B) Boys are less responsible than girls in Finland schools.

C) Girls never follow the rules in Turkey.

D) In Turkey, girls are more responsible than boys at school.



# 8 *Support* Try yourself

Haktan Bağış KIRKKESELİ

LGS ALTIN ORAN

7. A five-star hotel offers some activities to its guests. They don't need to pay anything extra for them because they are included in the price. These activities vary from extreme activities to fun activities. The hotel counted the number of adults (26-30 years old) and young people's (18-25 years old) preferences for the activities, and they will add more activities according to the results.



Ages between 18-25



Ages between 26-30

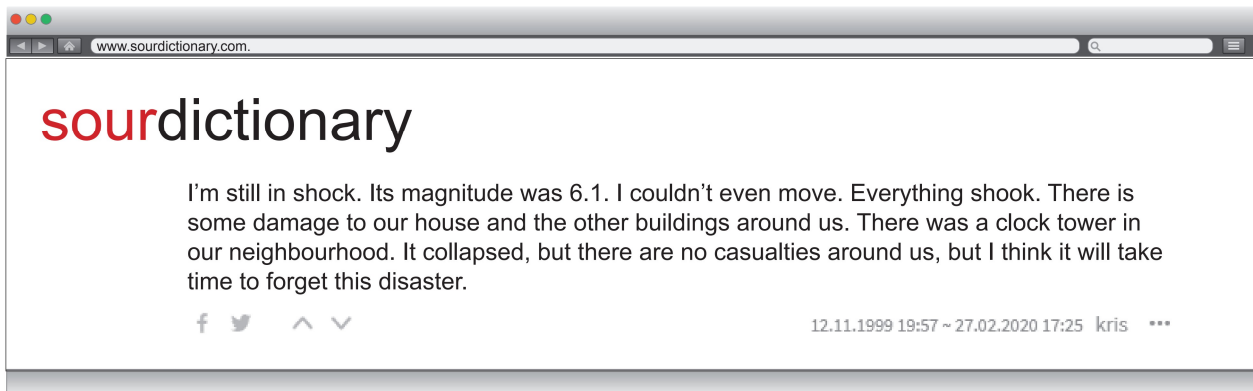


Which sentence can be CORRECT according to the results?

- A) Some of the people over the age of 25 don't like taking risks.      B) Young people prefer kitesurfing to rock climbing.  
C) Trekking is the most popular activity for adults.      D) Young people enjoy cycling most.

*Support*

8. There is a webpage called [www.sourdictionary.com](http://www.sourdictionary.com). People talk about anything on it. Someone posts a topic and people write information or talk about their experiences. Today's trending topic is 'The big catastrophe of October 10<sup>th</sup>, 2019'. Lucy wrote her comment under this headline.



Which disaster did she comment about?

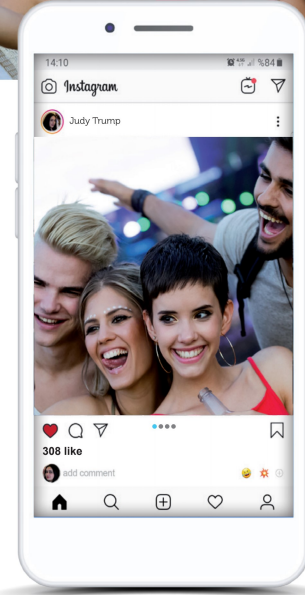
- A) A drought      B) An avalanche      C) A volcanic eruption      D) An earthquake



9. Judy was at a pop concert yesterday. The singer is one of the most well-known ones in the country. It is really difficult to find a ticket for one of her concerts. Judy went there with a group of friends. She took a lot of selfies and she shared one of them on her Instagram. She has so many followers and they sent a lot of messages to her because of her post. They had lots of fun and loved the music.

**What can we say about Judy?**

- A) She goes to a lot of pop concerts.  
B) She didn't like the concert at all.  
C) She thought the concert and the singer's performance were amazing.  
D) She thinks her own voice is better than the singer's.



*Support*

10. **Secretary** : Hello, I am Charles Fante.  
How may I help you?
- Mr. Welsh** : May I speak to the manager,  
please?
- Secretary** : What is it about?
- Mr. Welsh** : I need to make a complaint  
about his office. Someone  
has sent me an illegal email.
- Secretary** : I see. Hold on a moment. I'll  
put you through immediately.
- Mr. Welsh** : Thank you.

**Which sentence has the same meaning  
as the underlined sentence?**

- A) Hang up the phone.  
B) Hold the line.  
C) I will get you through.  
D) It is a bad line.