

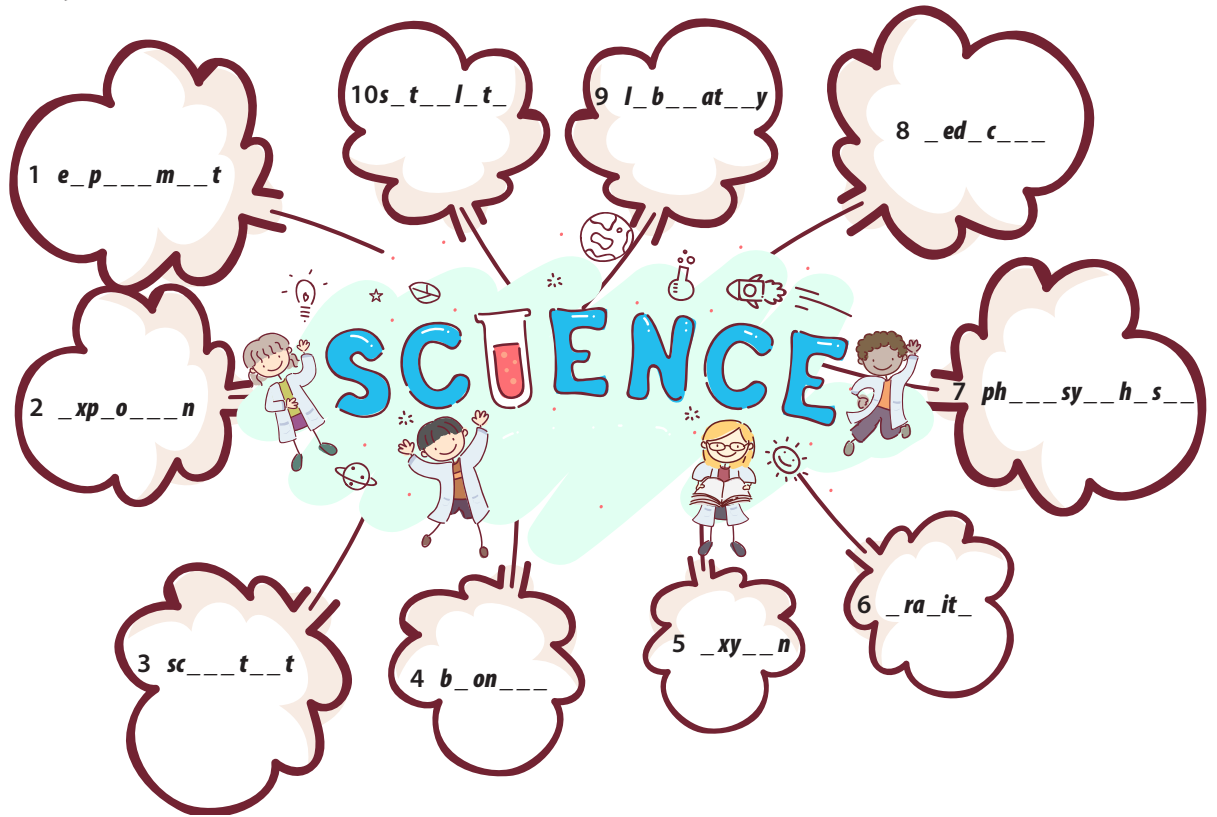
Unit 9 - Quiz 1

Name & Surname : Class :

Student ID Number : Date :

School : Result :

A Complete the words related to "science." (10x2=20)



B Match the synonym words below. (10x2=20)

- | | |
|--------------------------------------|--------------|
| 1 <input type="checkbox"/> improve | a drug |
| 2 <input type="checkbox"/> medicine | b sad |
| 3 <input type="checkbox"/> lab | c develop |
| 4 <input type="checkbox"/> depressed | d fake |
| 5 <input type="checkbox"/> virtual | e laboratory |

Match the words that go together.

- | | |
|---|--------------|
| 6 <input type="checkbox"/> solar | f fiction |
| 7 <input type="checkbox"/> electronically | g accident |
| 8 <input type="checkbox"/> operating | h controlled |
| 9 <input type="checkbox"/> airplane | i system |
| 10 <input type="checkbox"/> science | j table |

C Complete the sentences with the correct forms of the words in the box. (5x4=20)

» explore » design » invent » discover » test

- 1 We are the new product on animals now.
- 2 The engineers a new car called "Megatics".
- 3 F. Hoffman the drug aspirin in 1899.
- 4 In physics lesson, we can the inside of an atom.
- 5 The scientist inflection 200 years ago.

D Read the paragraph and write T "True or F "False". (5x4=20)

Many years ago, sailors put their dirty clothes in a bag, dropped the bag into the sea and pulled it along the water. But nowadays, washing machines make life easier for women. But it has developed a lot since the first washing machine. The first ones were like huge buckets. People used something called a "dolly" to move the clothes around. It was made of wood and had four "fingers" at the bottom. Later models also had a wringer bur wringers were not safe all the time. By the end of 1930s, the first fully automatic machine was in use. By the 1960s, these machines were cheaper to buy. Today, people can wash their clothes by pressing a few buttons. Isn't it easy?

- 1 Dolly is an equipment that moves the clothes.
- 2 Washing machines were not expensive in the 1960s.
- 3 The wringers were dangerous.
- 4 Washing clothes has always been difficult.
- 5 Today, the washing machines are the same as the first ones.

E Read the answers and ask questions according to the paragraph. (5x4=20)

- 1 ?
-It's called "dolly".
- 2 ?
-By pressing a few buttons.
- 3 ?
-It had four fingers at the bottom.
- 4 ?
-At the end of the 1930s.
- 5 ?
-In a bag.

GOOD LUCK !